

PEANUTS

featuring
"Good ol'
Charlie Brown"
by SCHULZ

5.1

"AN EARTHQUAKE IS A SHAKING MOVEMENT OF THE EARTH'S SURFACE"

"THEY ARE MOST COMMONLY CAUSED BY THE JAR GIVEN THE EARTH'S SURFACE WHEN A FAULT OCCURS"

"STUDY OF EARTHQUAKES HELPS US TO LEARN MORE ABOUT THE NATURE OF THE EARTH'S INTERIOR"

"EVERYONE SHOULD KNOW WHAT TO DO IF AN EARTHQUAKE OCCURS"

"THE SAFEST PLACE TO STAND DURING AN EARTHQUAKE IS IN A DOORWAY"



Garfield



OKAY, HERE GOES, GUYS!

BLINK!
THE PLANET EARTH JUST WENT DARK. WHAT DO YOU SUPPOSE HAPPENED, KIDS?
OH, I DON'T KNOW, DAD. MAYBE JON ARBUCKLE PLUGGED HIS CHRISTMAS LIGHTS IN AGAIN?
DUH

the OTHER COOL DOG BEDS

SAKURA, I WANT YOU TO CHOOSE A NEW DOG BED.

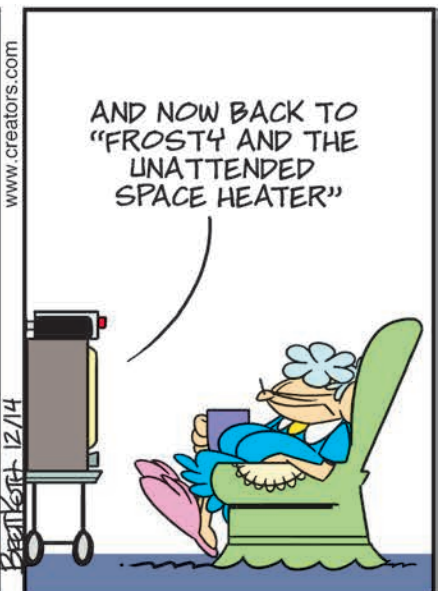
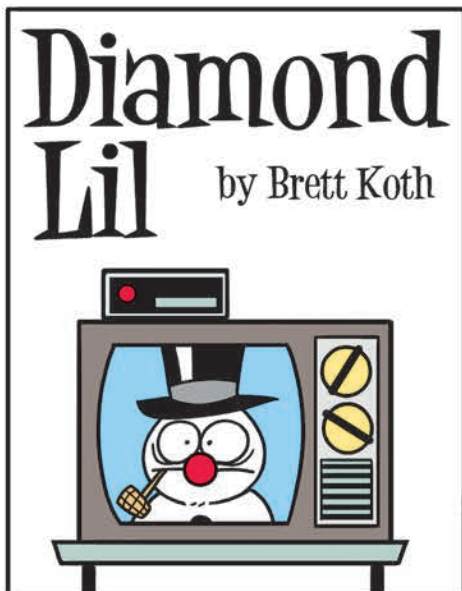
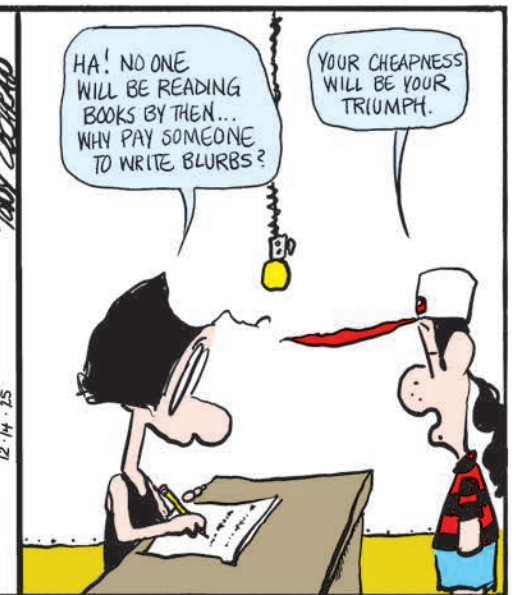
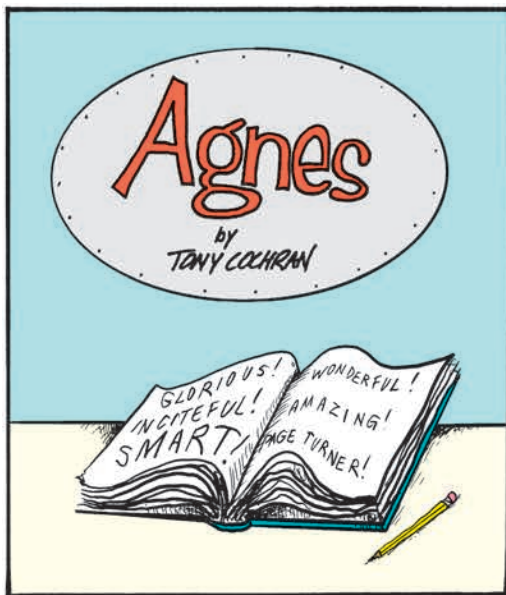
TOO BIG.

TOO SMALL.

TOO SOFT.

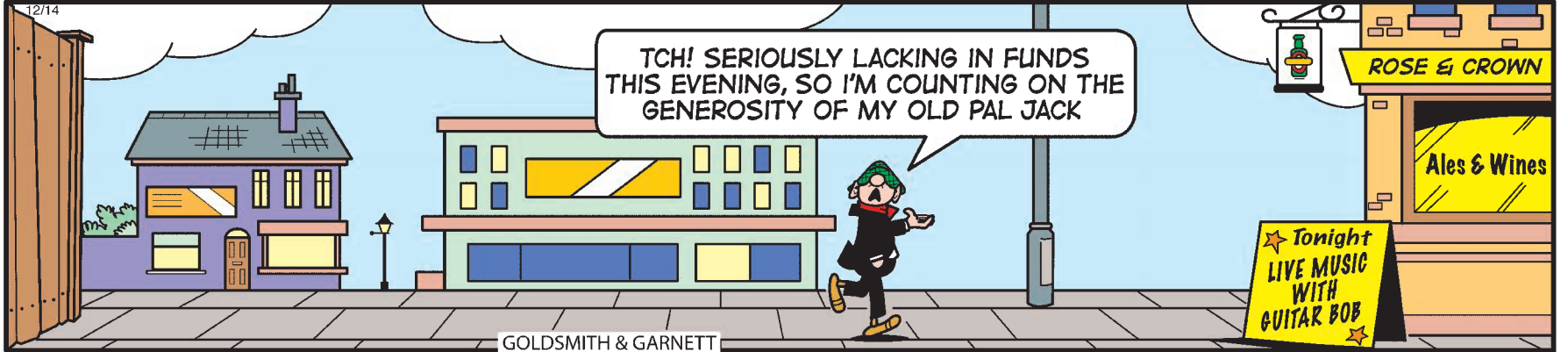
TOO HARD.

JUST RIGHT.
WHY AM I NOT SURPRISED.

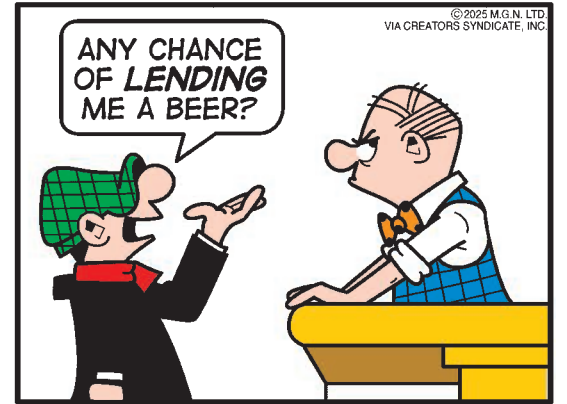
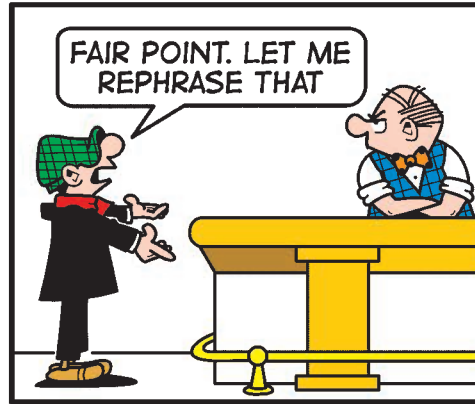
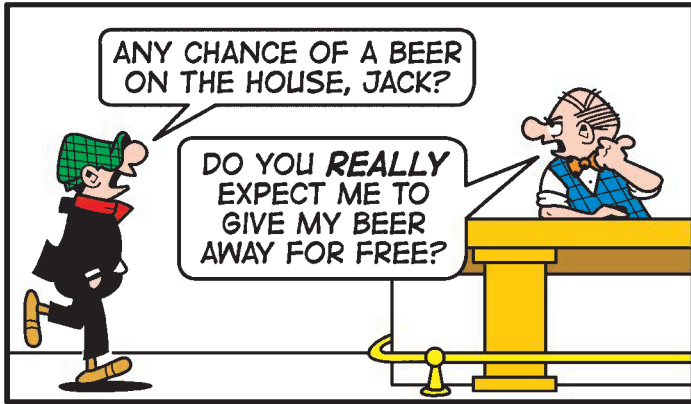


ANDY CAPP

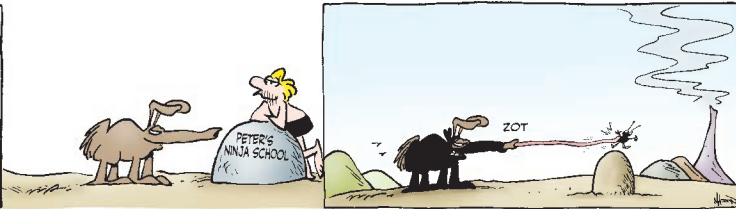
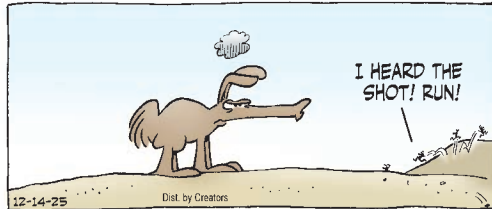
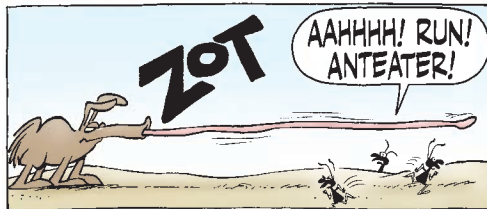
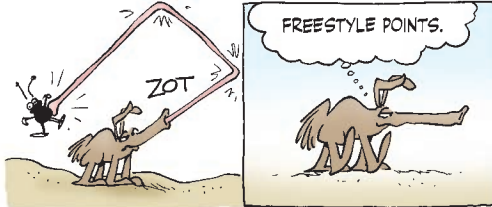
by Smythe



GOLDSMITH & GARNETT

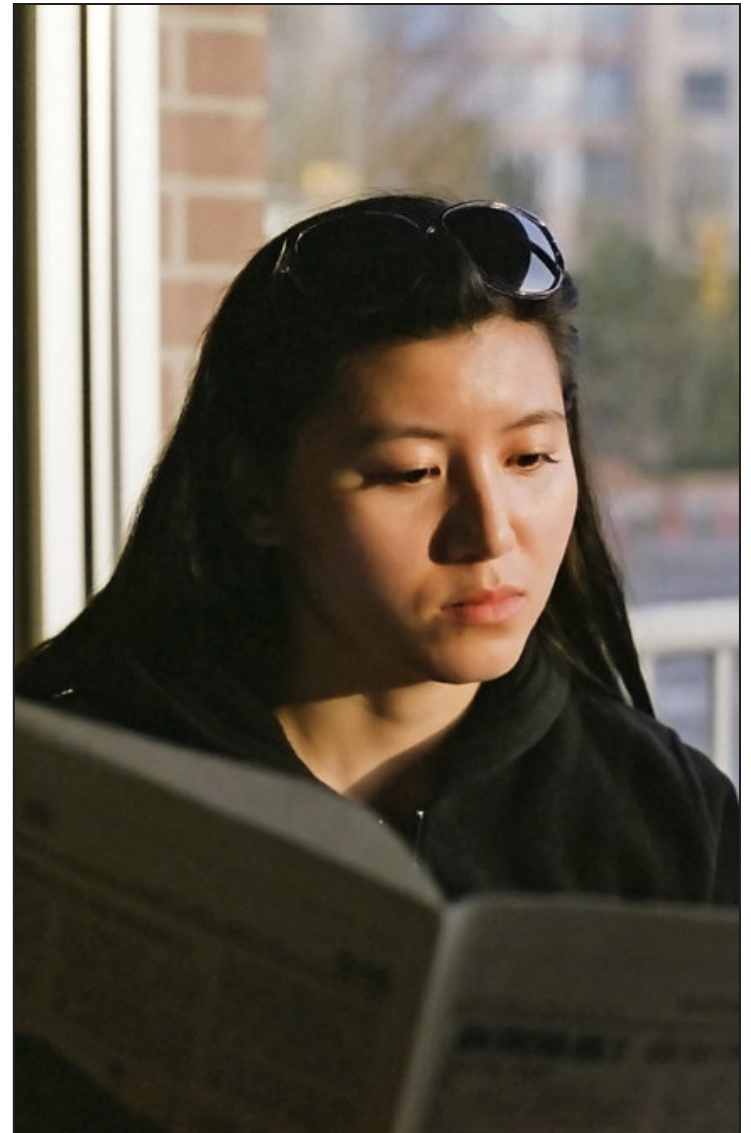


© 2025 M.G.N. LTD. VIA CREATORS SYNDICATE, INC.



DOGS OF C-KENNEL

BY MICK MASTROIANNI AND MASON MASTROIANNI



Call 715-526-2121 to subscribe.